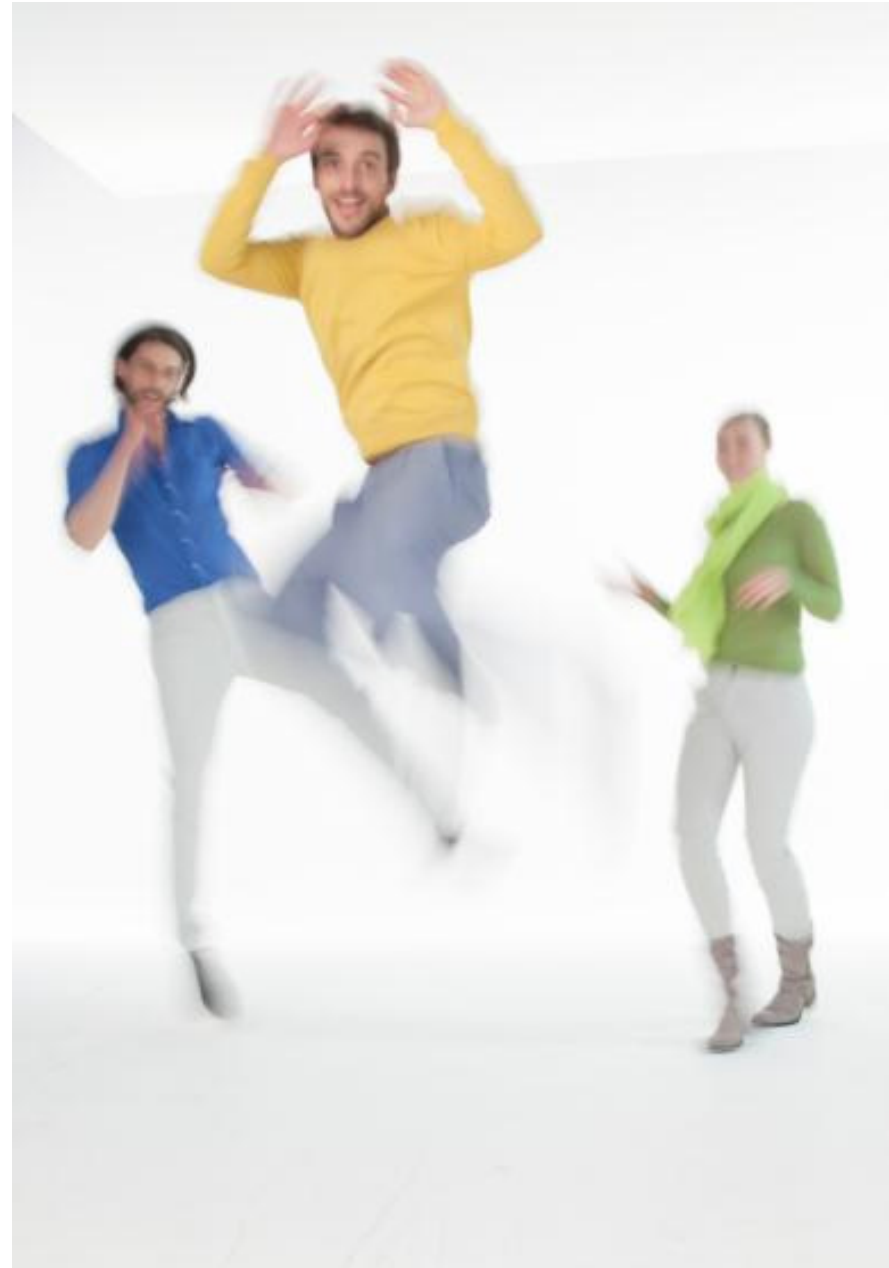


It was high time to
reinvent sitting.

That is why we did it.



Life in Motion.

Children are constantly on the move. Naturally!



In modern everyday life, adults put themselves into a straightjacket of motionlessness.

And that demands a very high price:
our health.



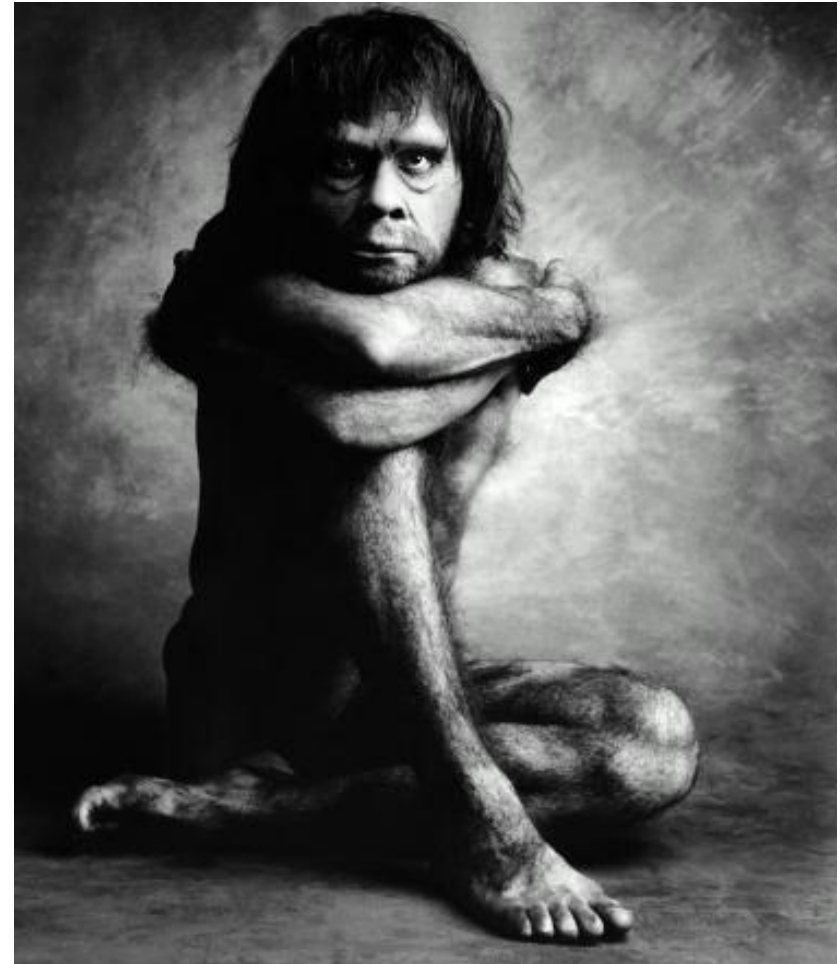
We have our ancestors bodies.
Not their movement routines.

Genetically speaking humans are at the same stage
as about 150.000 years ago.

Our bodies are made for running, climbing, bending,
jumping – not for hours of sitting.

But that is exactly what we do. Mostly at work.

Quite obvious.
It time to change the way we work.



aeris: The Inventors of 3D-Ergonomics.

We have one passion and one key success factor:
Movement!

Innumerable sitting concepts – even with so-called „ergonomic features“ – offer no solution.

The time was ripe to reinvent sitting – beyond conventions and with one goal in mind: to bring more movement into everyday office life.

This idea led aeris to invent 3D ergonomics in 1997.

For our customers this means movement through active-dynamic sitting while working which results in better health, greater motivation and increased productivity.

And success proves us right. Our active seats set benchmarks and have put aeris-Impulsmöbel into the Top 100 of the most innovative small and medium-sized German businesses.



The aeris Motion Concept: : Move. Naturally.

Not all movement is healthy. Monotonous movements, abrupt movements, too much Movement and unnatural movements can stress the body.

That is why the aeris motion concept was developed with health experts, chiropractors, and doctors. The aeris concept is different. It is patented.

It works. And it feels good.

Vertical Motion.



Sideway Flexibility.



Forward tilt.



Sounds easy. Is Hi Tech.

To make natural movement in seating possible aeris invests in R&D like no other chair manufacturer. aeris does not buy chair parts, but develops and engineers all mechanical parts itself.

The result:

An aeris chair has

- up to 192 parts – all in-house developments
- many patents
- many awards for innovation, design, and function

And – most important:
Many happy, healthy customers.



Swivel bearing:

Our own special development of a ball bearing with patented fine adjustment of the swivel parameters is one of the hi-tech highlights of the **3Dee**.



3D technology:

Slide bearings, compression springs, ball bearings and composite materials (rubber/metal) are needed to make the 3D movement something unique.



Adjustable lumbar support and backrest counter-pressure:

The lamellar technology for the adjustable lumbar support is new and patented. The intelligent permanent mechanism of the backrest counter-pressure provides extreme comfort.



Perfect timing for the Market.
The buzz is here!

Inactivity tied to 5.3 million deaths worldwide, similar to smoking

“Sitting is the new smoking”

“we are
chair-sentenced”

Dr James Levine, a leading researcher on health hazards of too much sitting

When we don't move for long hours, the body is not able to metabolise carbohydrates and lipids properly. "And when you are too inactive from hour to hour, the body has little reason to keep the cholesterol and fat using pathways in the body running at a rapid pace like it should, "

says Prof Marc Hamilton who works at the inactivity physiology lab at the Pennington Biomedical Center, Louisiana. In his studies, he has found out that inactivity leads to loss of an enzyme called lipoprotein lipase, which determines how fast you can take the bad fat out of the blood. "Those days of life when you are mostly sitting, the fat can't be pulled out of the blood and be burned up by muscle. This makes fat go where you don't want it. It makes the good HDL cholesterol drop quickly. "

Having a regular workout routine doesn't help because "exercising does not make you sit less, " says Hamilton.

Sitting Time and All-Cause Mortality Risk in 222 497 Australian Adults

Hidde P. van der Ploeg, PhD; Tien Chey, MAppStats; Rosemary J. Korda, PhD; Emily Banks, MBBS, PhD; Adrian Bauman, MBBS, PhD
Arch Intern Med. 2012;172(6):494-500. doi:10.1001/archinternmed.2011.2174.

The aeris Product Portfolio.

From a niche to the market leader: aeris products are an integral part of ergonomic and office furniture portfolios in many markets.



swopper®
for the benefit of your back



swoppster®
active swivel stool for children



mov•man
Active-Sit-Stand



.3Dee
Active Office Chair



.3Dee
Active Office Chair

Active sitting without compromise.
On the new **3Dee**.

The patented **swopper technology**® supports and encourages natural movement in three dimensions.

It makes it possible to move **sideways, backwards and forwards and up and down**.

Active or comfortable?

There is no compromise with the **3Dee**.

Active 3D sitting stimulates your circulation and puts you in a good mood; it strengthens your back and boosts your performance in general.

The comfortable, ergonomically formed backrest supports you when you want to **consciously relax** but still gives you full freedom of movement.



The **3Dee**, the new office chair brings dynamics, health and quality of life into the office. It unites active-dynamic sitting with optimised ergonomic relaxation.

Dynamic in every detail.



Dynamic in every detail.

Active: dynamic sitting stimulates your circulation, puts you in a good mood and boosts your **performance**. Frequent change of posture strengthens your back and keeps your muscles fit.

Relaxing: the **physiological arching** of the **backrest** gives ergonomic and comfortable support for every shape of back. It provides support without restricting freedom of movement. The **lumbar support** and backrest counter-pressure can be individually adjusted with one hand.

High-Tech: the **patented swopper technology®** supports and encourages frequently changing sitting positions and harmonious **3D movement**. And, because the **3Dee** adapts to the movements of the sitter, your back keeps straight – even when you lean towards your desk.

Well-designed and healthy: the intelligent seat is slightly convex and is equipped with **flexzone®-technology**. This ensures an optimum fit without pressure points. The **breathable multi-zone** integral foam provides adaptive support and a healthy seat climate.



3Dee:
the most innovative office chair in the world.



100 % aeris.

Four years R&D,
100% Inhouse- Engineering and Design
7 Patents
Market Launch in Germany: November 2012.
A Big success.



Let's move your business.

